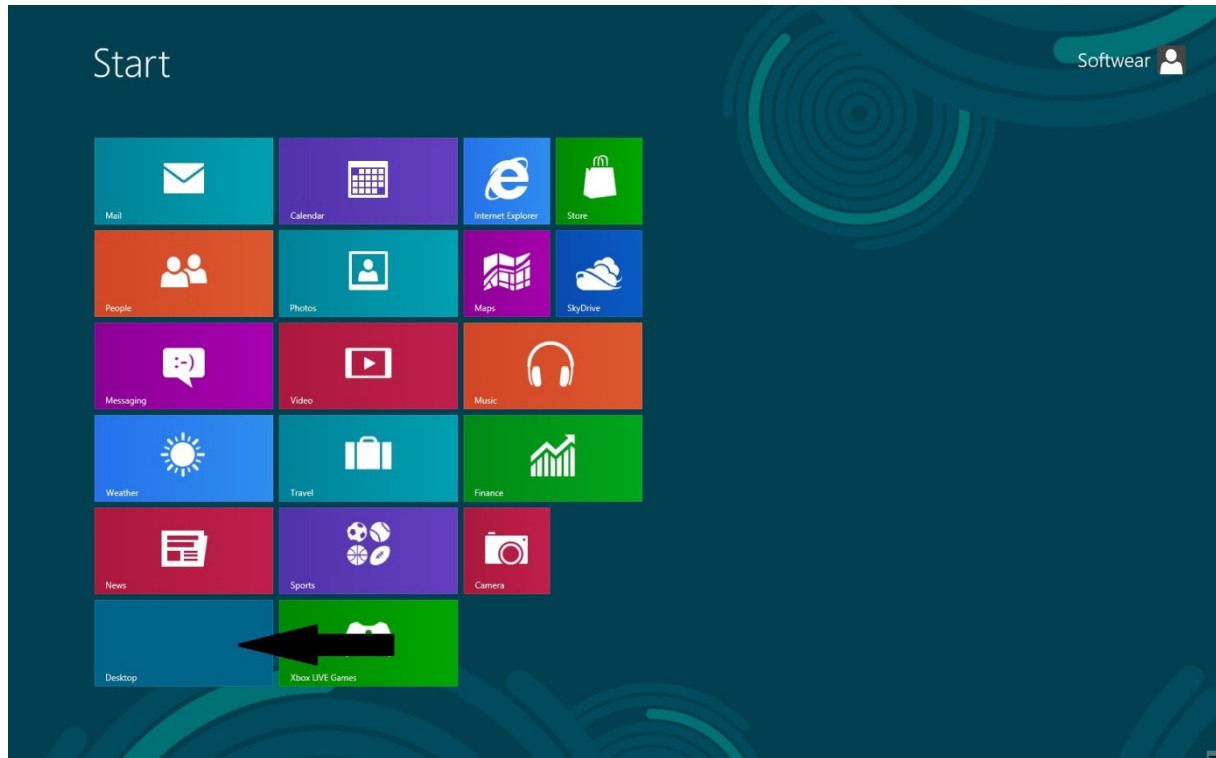


## Installatie PDFconverter op Windows8

1. Controleer of adobe reader op uw pc geïnstalleerd staat.  
Mocht dit niet het geval zijn dan kunt u de laatste versie downloaden op <http://get.adobe.com/nl/reader/>
2. Start uw desktop door links onderin op “desktop” te klikken.



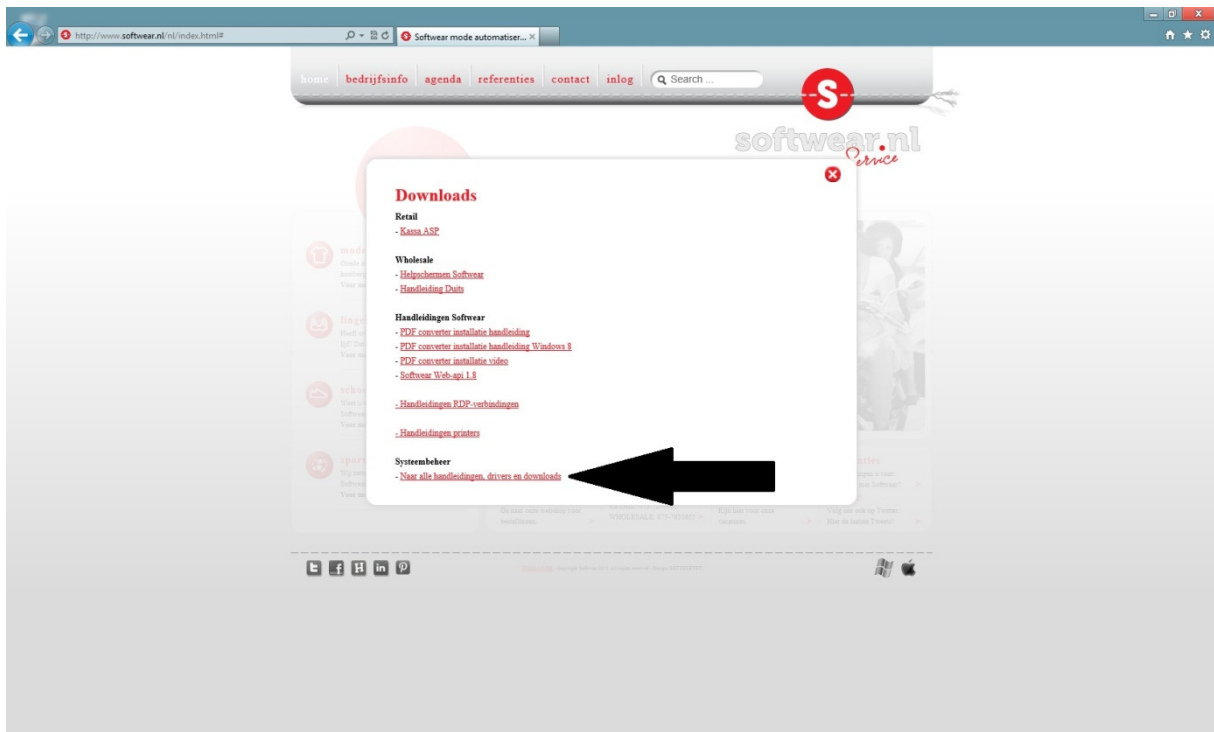
3. Start internet explorer.



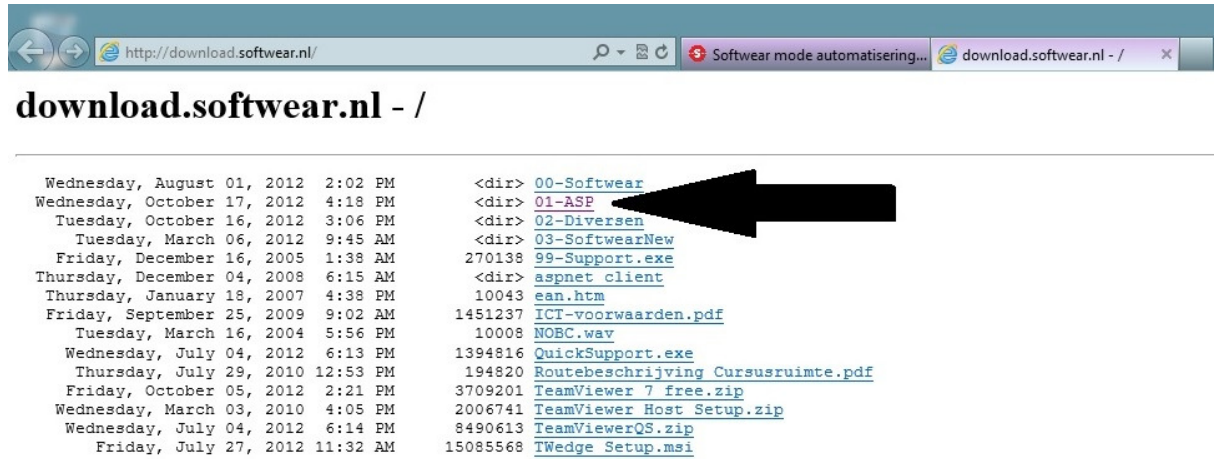
4. Ga naar [www.software.nl](http://www.software.nl) en klik op downloads.



5. Klik onderin op “Naar alle handleidingen, drivers en downloads”



6. Er wordt een tweede tabblad geopend. Klik op ASP.

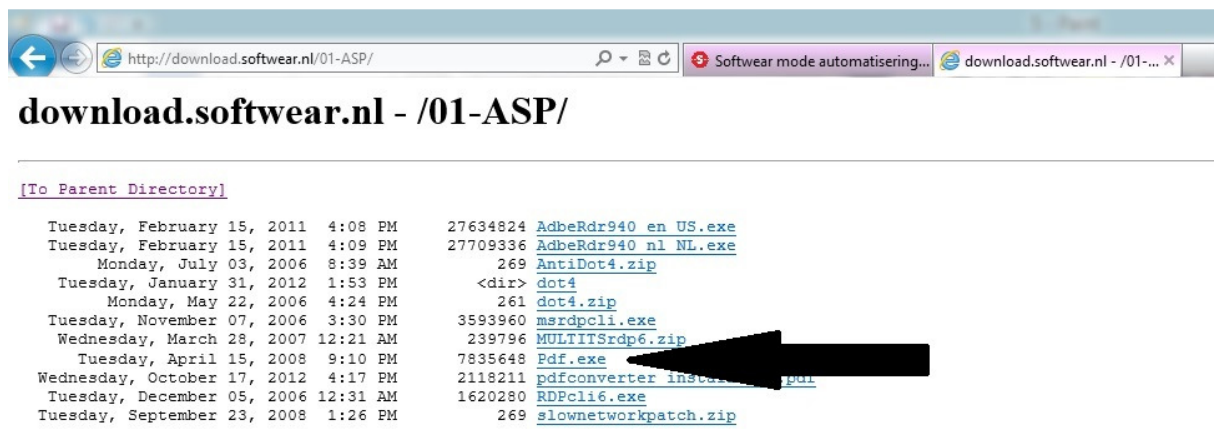


http://download.softwear.nl/

**download.softwear.nl - /**

Wednesday, August 01, 2012 2:02 PM	<dir>	<a href="#">00-Softwear</a>
Wednesday, October 17, 2012 4:18 PM	<dir>	<a href="#">01-ASP</a>
Tuesday, October 16, 2012 3:06 PM	<dir>	<a href="#">02-Diversen</a>
Tuesday, March 06, 2012 9:45 AM	<dir>	<a href="#">03-SoftwearNew</a>
Friday, December 16, 2005 1:38 AM	270138	<a href="#">99-Support.exe</a>
Thursday, December 04, 2008 6:15 AM	<dir>	<a href="#">aspnet client</a>
Thursday, January 18, 2007 4:38 PM	10043	<a href="#">ean.htm</a>
Friday, September 25, 2009 9:02 AM	1451237	<a href="#">ICT-voorwaarden.pdf</a>
Tuesday, March 16, 2004 5:56 PM	10008	<a href="#">NOBC.wav</a>
Wednesday, July 04, 2012 6:13 PM	1394816	<a href="#">QuickSupport.exe</a>
Thursday, July 29, 2010 12:53 PM	194820	<a href="#">Routebeschrijving Cursusruimte.pdf</a>
Friday, October 05, 2012 2:21 PM	3709201	<a href="#">TeamViewer 7 free.zip</a>
Wednesday, March 03, 2010 4:05 PM	2006741	<a href="#">TeamViewer Host Setup.zip</a>
Wednesday, July 04, 2012 6:14 PM	8490613	<a href="#">TeamViewerQS.zip</a>
Friday, July 27, 2012 11:32 AM	15085568	<a href="#">TWedge Setup.msi</a>

7. Klik op Pdf.exe



http://download.softwear.nl/01-ASP/

**download.softwear.nl - /01-ASP/**

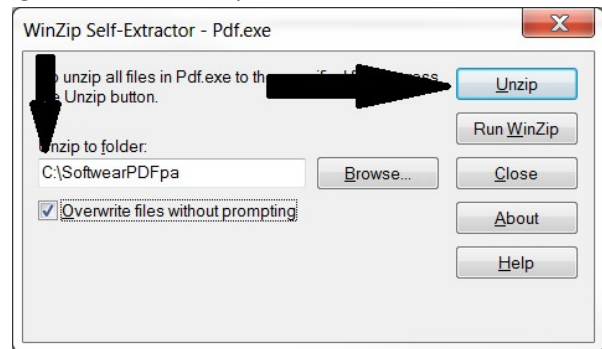
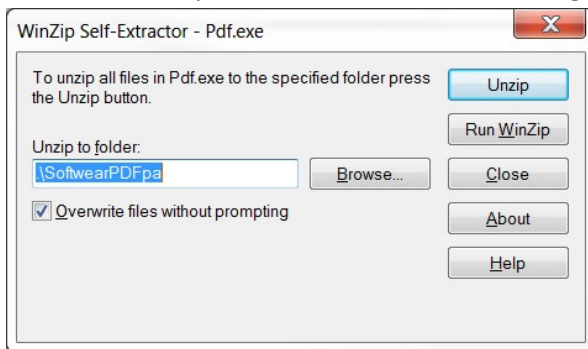
[\[To Parent Directory\]](#)

Tuesday, February 15, 2011 4:08 PM	27634824	<a href="#">AdbRdr940 en US.exe</a>
Tuesday, February 15, 2011 4:09 PM	27709336	<a href="#">AdbRdr940 nl NL.exe</a>
Monday, July 03, 2006 8:39 AM	269	<a href="#">AntiDot4.zip</a>
Tuesday, January 31, 2012 1:53 PM	<dir>	<a href="#">dot4</a>
Monday, May 22, 2006 4:24 PM	261	<a href="#">dot4.zip</a>
Tuesday, November 07, 2006 3:30 PM	3593960	<a href="#">msrdpcli.exe</a>
Wednesday, March 28, 2007 12:21 AM	239796	<a href="#">MULTITSRdp6.zip</a>
Tuesday, April 15, 2008 9:10 PM	7835648	<a href="#">Pdf.exe</a>
Wednesday, October 17, 2012 4:17 PM	2118211	<a href="#">pdfconverter_installer.pdf</a>
Tuesday, December 05, 2006 12:31 AM	1620280	<a href="#">RDPcli6.exe</a>
Tuesday, September 23, 2008 1:26 PM	269	<a href="#">slownetworkpatch.zip</a>

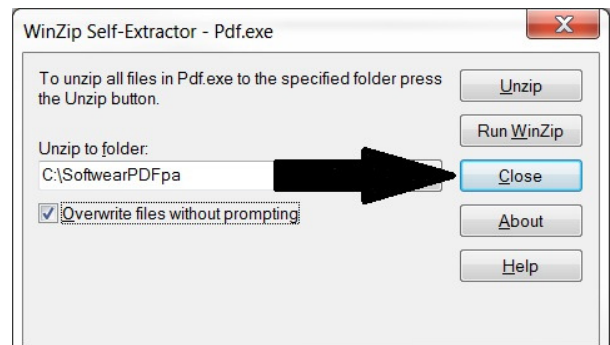
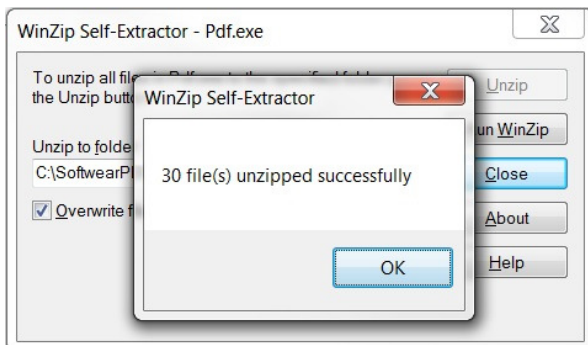
8. Klik op Uitvoeren.



9. Vervang de . (punt) in .\SoftwarePDFpa wat in de linker afbeelding is aangegeven in C:\SoftwarePDFpa zoals in de rechter afbeelding aangegeven en kies unzip.



10. De files zijn ge-unzipped. Klik op OK en op Close



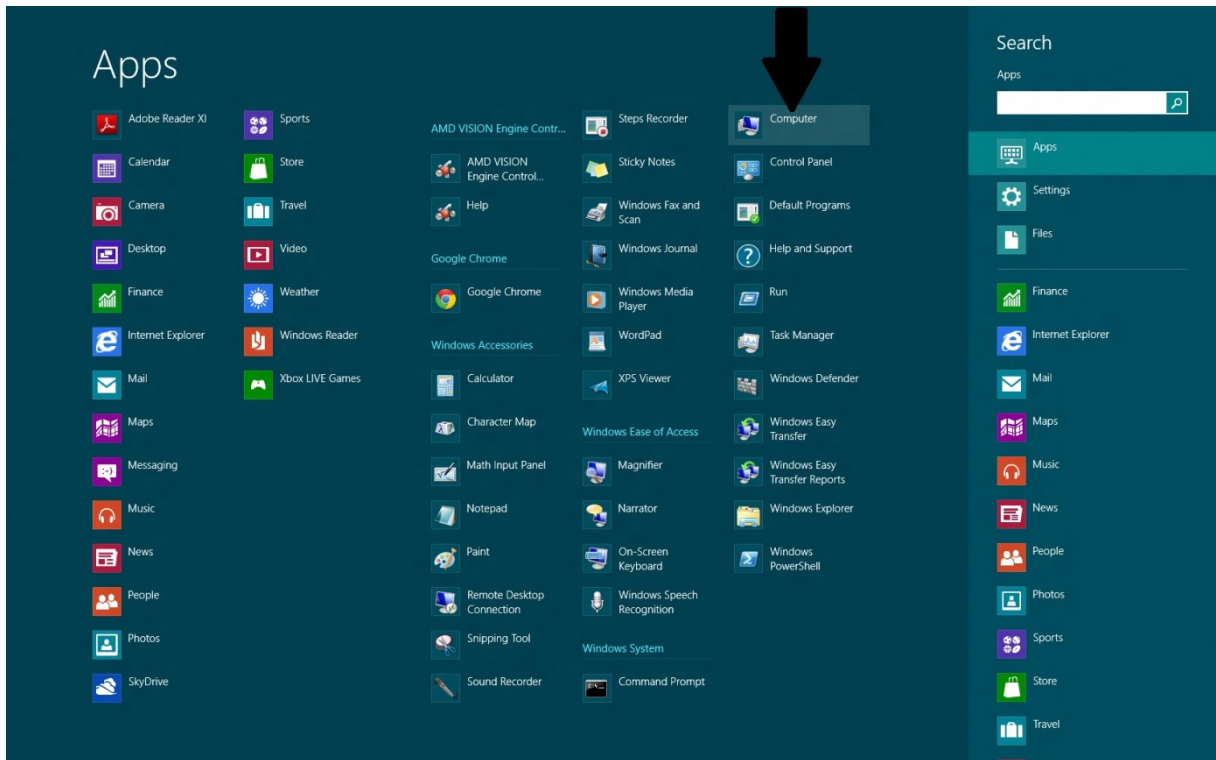
11. Ga met de cursor (muis pijltje) naar de rechter bovenhoek (tot je niet verder kan) van het scherm. Vervolgens verschijnt de zwarte balk aan de rechterkant.



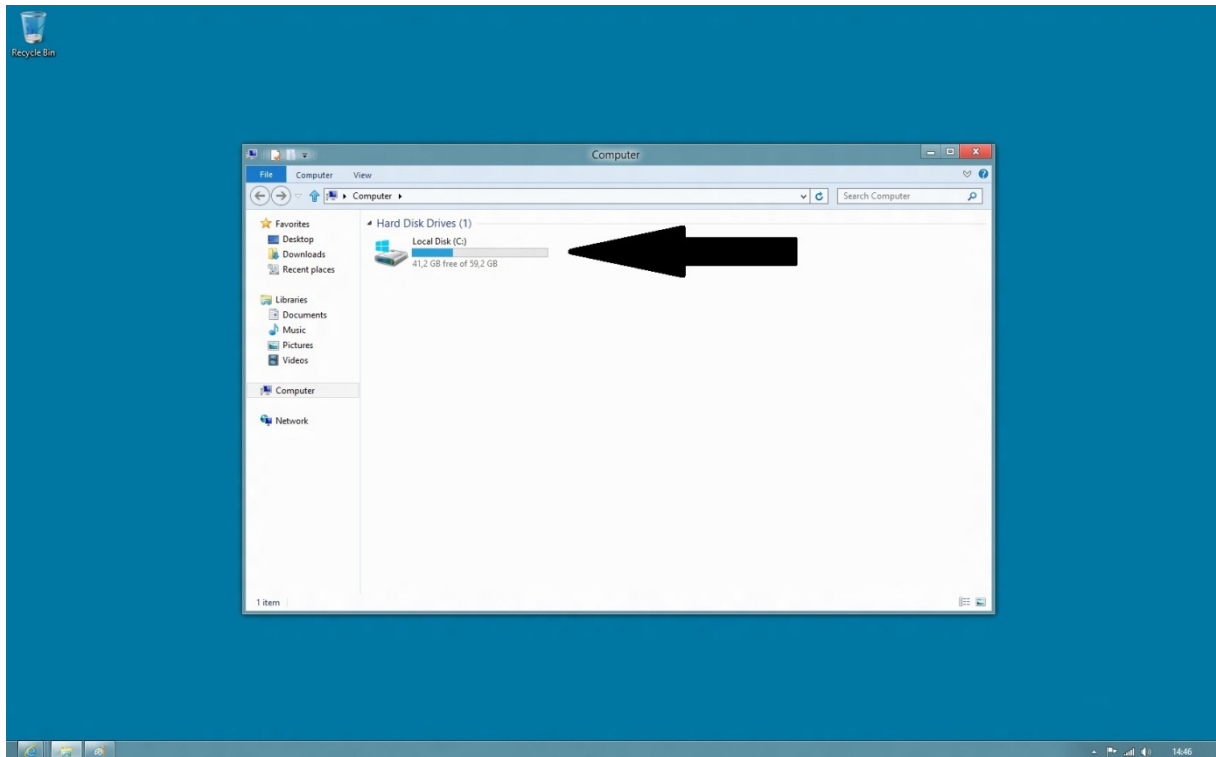
12. Klik op Search.



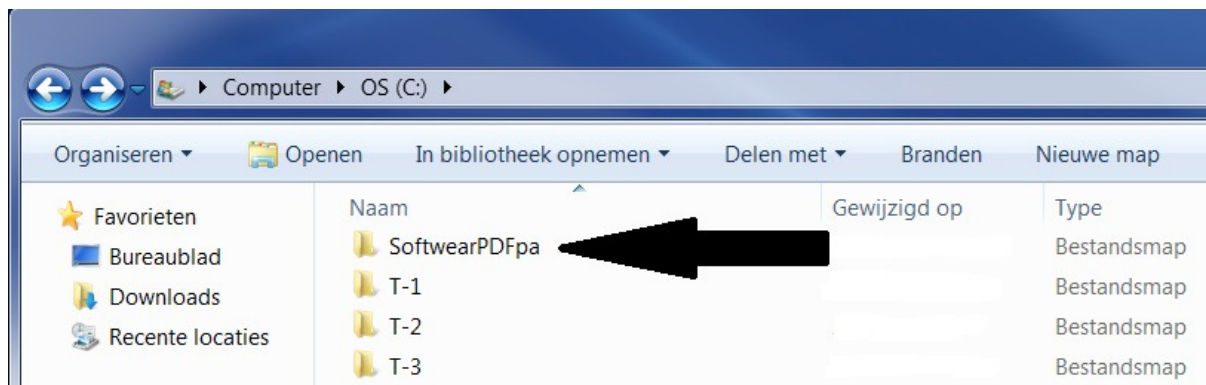
### 13. Klik op "Computer"



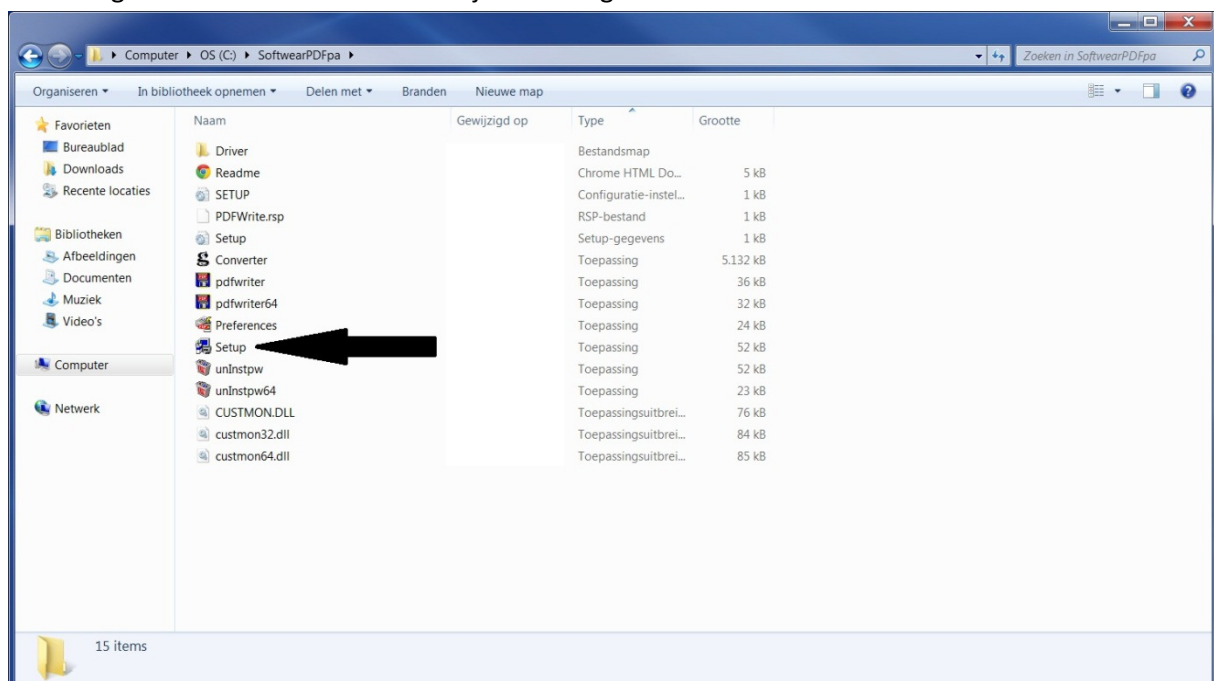
### 14. Dubbelklik de lokale C:\ schijf

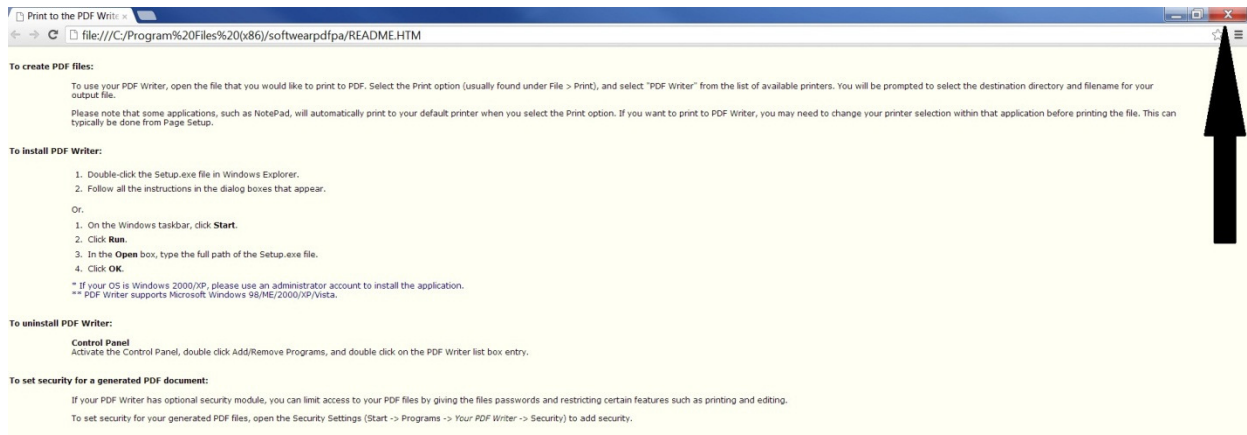
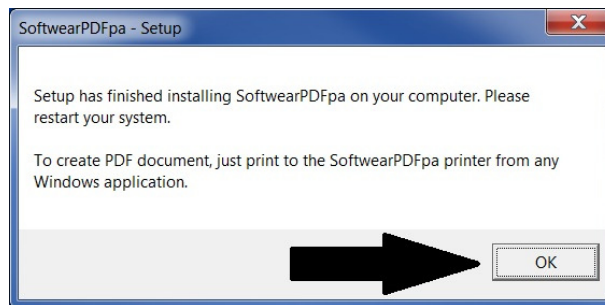
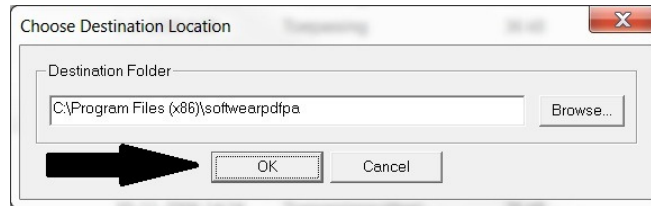
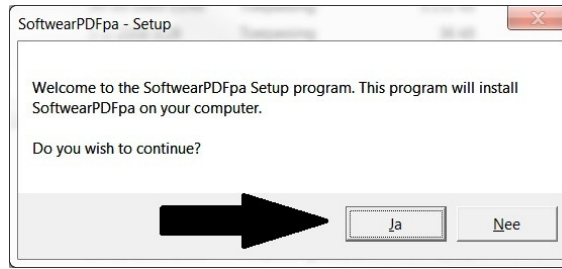


15. Kies de map SoftwarePDFpa



8. Dubbelklik op setup (toepassing), vervolgens op JA, en OK. De setup wordt nu gestart. Vervolgens wordt er in de internet browser een pagina gestart met een korte beschrijving over de PDFconverter. Deze mag rechts bovenin met het kruisje worden gesloten.





Print to the PDF Writer x

file:///C:/Program%20Files%20(x86)/softwearpdfpa/README.HTM

**To create PDF files:**

To use your PDF Writer, open the file that you would like to print to PDF. Select the Print option (usually found under File > Print), and select "PDF Writer" from the list of available printers. You will be prompted to select the destination directory and filename for your output file.

Please note that some applications, such as NotePad, will automatically print to your default printer when you select the Print option. If you want to print to PDF Writer, you may need to change your printer selection within that application before printing the file. This can typically be done from Page Setup.

**To install PDF Writer:**

1. Double-click the Setup.exe file in Windows Explorer.
2. Follow all the instructions in the dialog boxes that appear.

Or:

1. On the Windows taskbar, click **Start**.
2. Click **Run**.
3. In the **Open** box, type the full path of the Setup.exe file.
4. Click **OK**.

\* If your OS is Windows 2000/XP, please use an administrator account to install the application.  
\*\* PDF Writer supports Microsoft Windows 98/ME/2000/XP/Vista.

**To uninstall PDF Writer:**

**Control Panel**  
Activate the Control Panel, double click Add/Remove Programs, and double click on the PDF Writer list box entry.

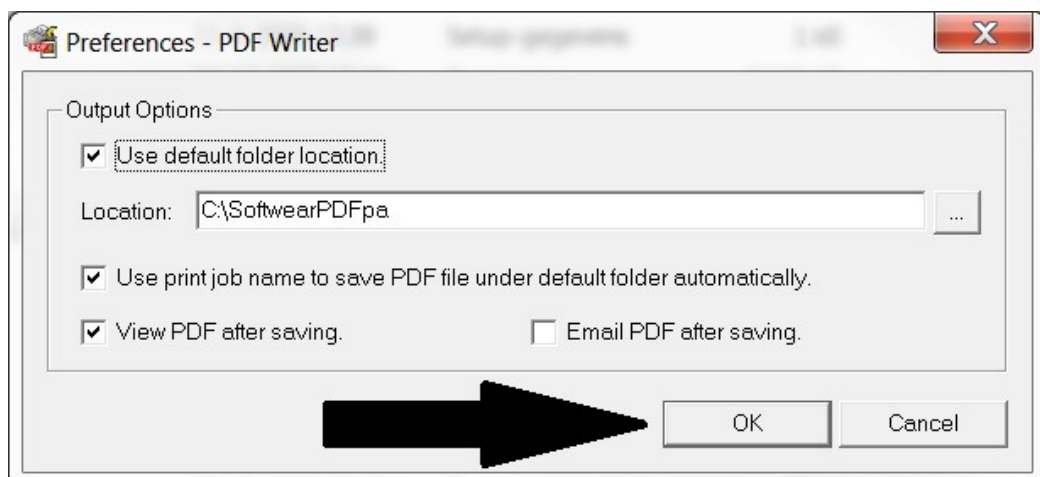
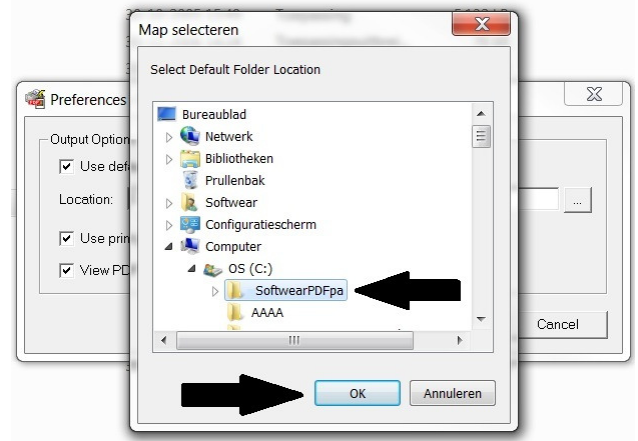
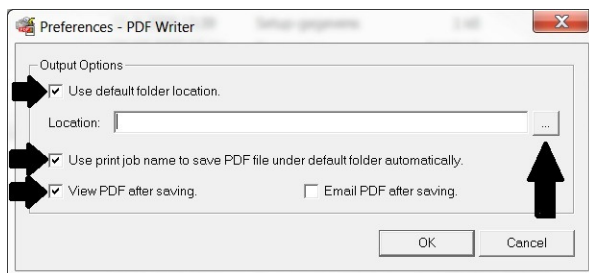
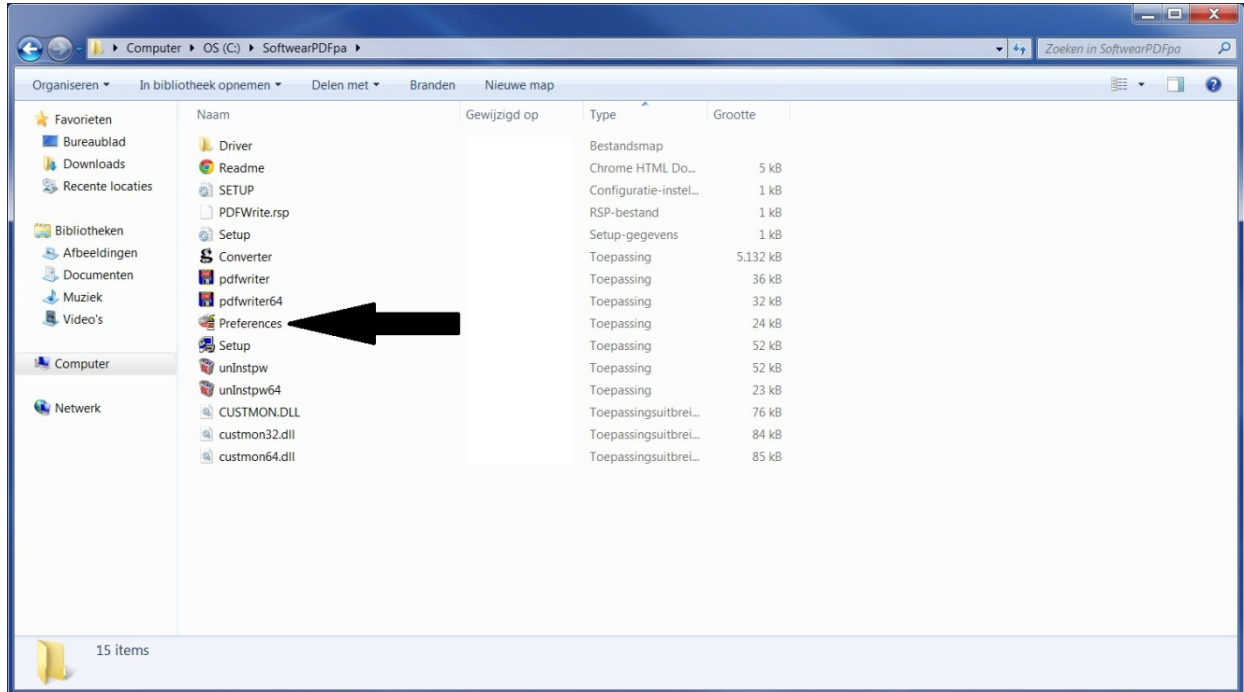
**To set security for a generated PDF document:**

If your PDF Writer has optional security module, you can limit access to your PDF files by giving the files passwords and restricting certain features such as printing and editing.

To set security for your generated PDF files, open the Security Settings (Start -> Programs -> Your PDF Writer -> Security) to add security.

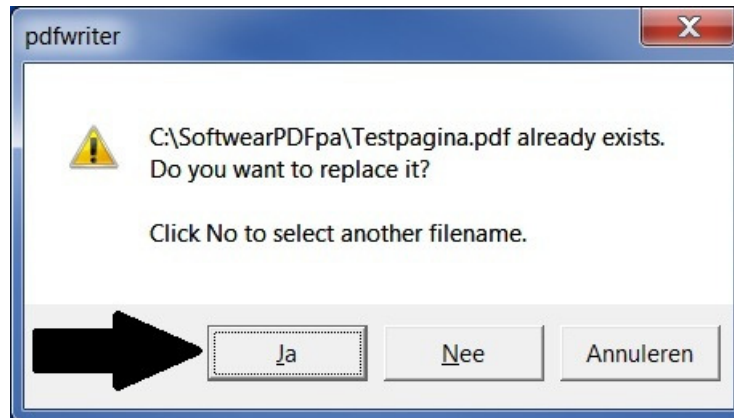


- Ga naar de map SoftwarePDFpa en klik op Preferences.
- Vink alle 3 de linker vinkjes aan. En klik op het vierkantje met de 3 puntjes.
- Wijs hier de map SoftwarePDFpa op de C:\ aan en klik op OK.

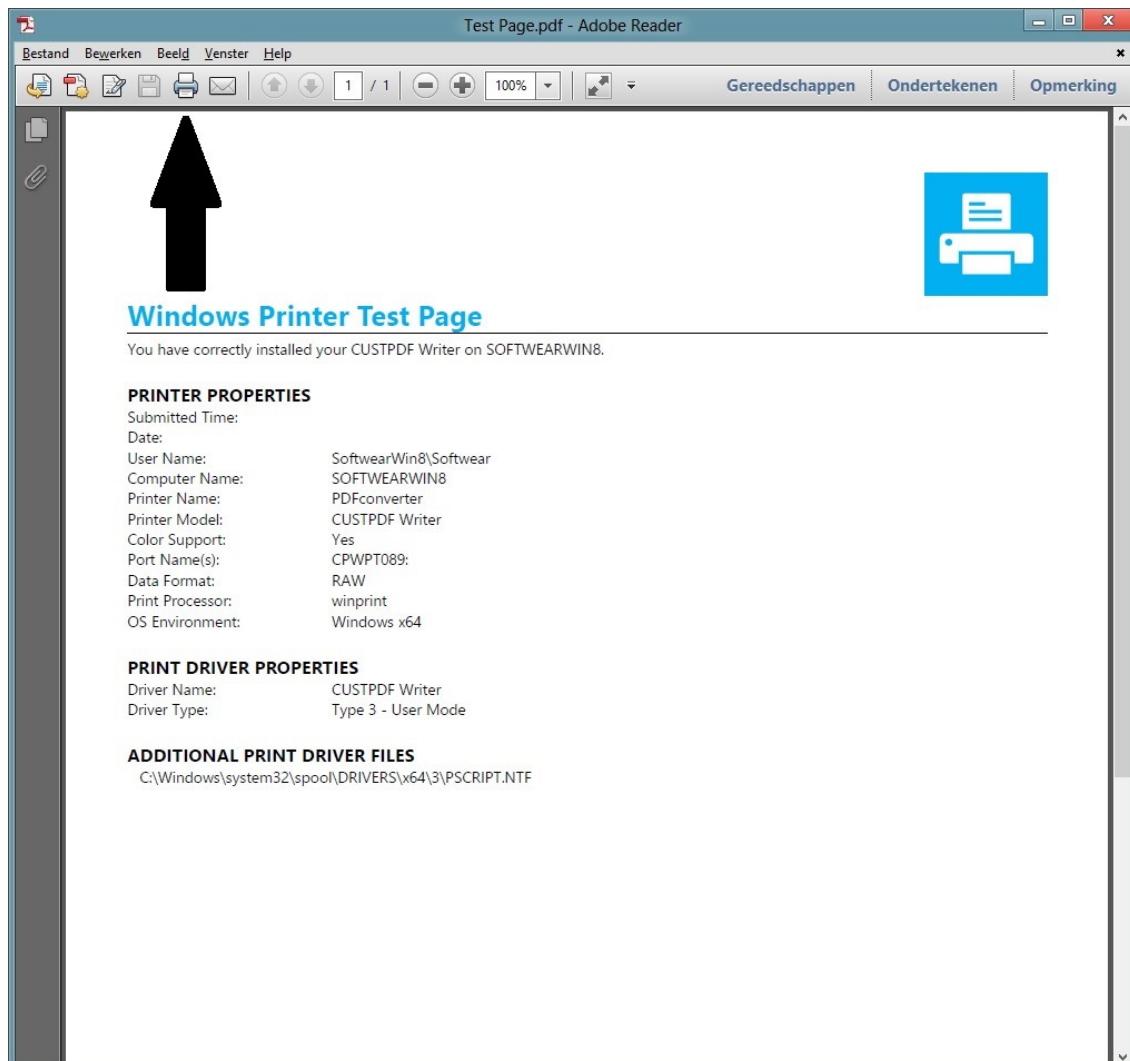


10. Sluit alle schermen door op het kruisje rechts bovenin te klikken.

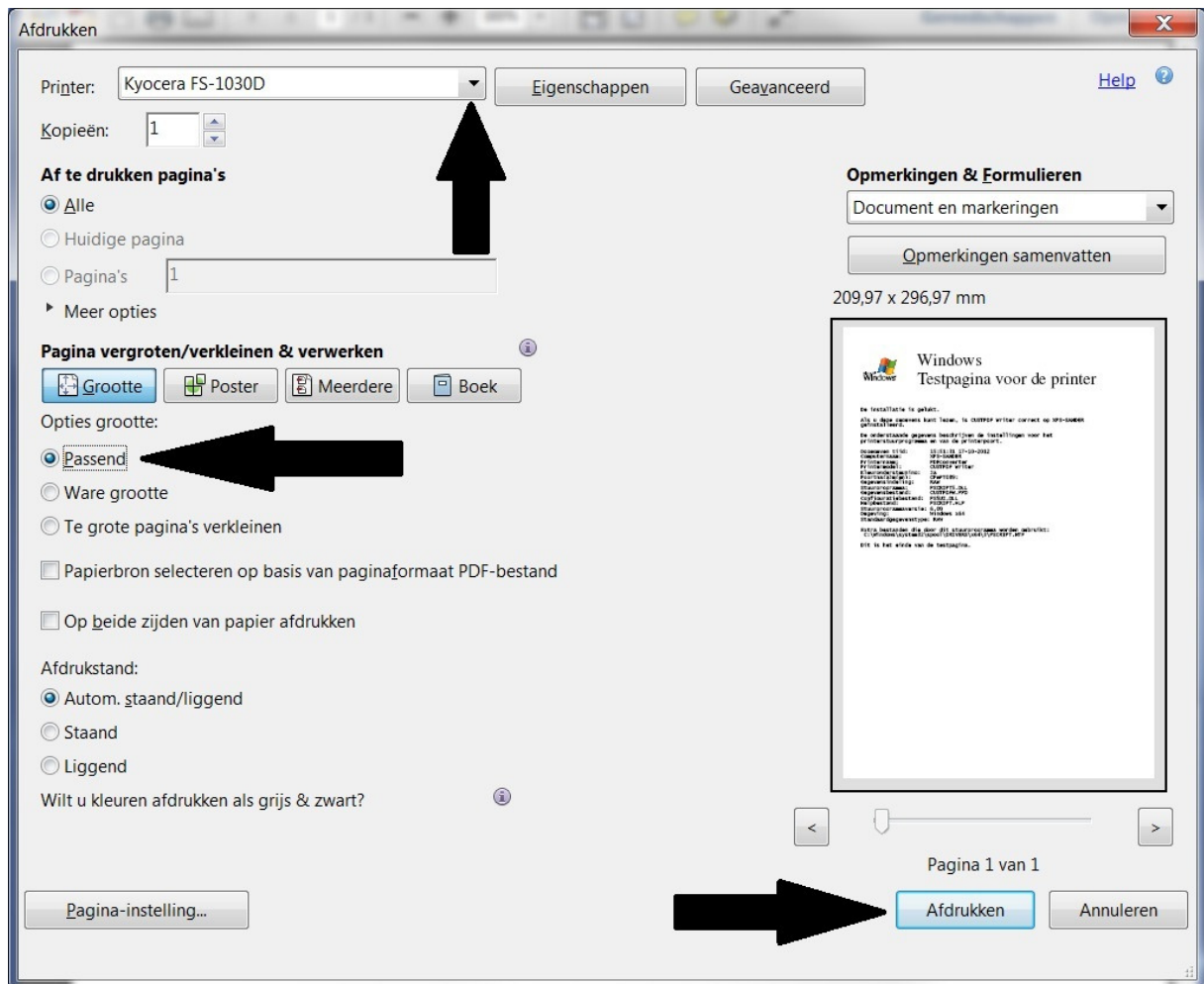
Maak verbinding met Softwear en probeer een lijstje te printen. Onder printer dialoog krijgt u nu de optie PDFconverter. Wanneer u deze selecteerd krijgt u de onderstaande melding waarbij u altijd Ja kunt klikken.



11. Adobe reader wordt nu op uw computer opgestart en uw lijstje wordt weergegeven. Klik vervolgens op het printer icoontje bovenin.



12. Kies bovenin uw eigen printer. Zet halverwege de pagina het bolletje op Passend en kies rechtsonderin voor Afdrukken.



Einde Installatie.

NB. Sluit na elk printje adobe reader met het kruisje rechts bovenin en u komt terug in Softwear.